

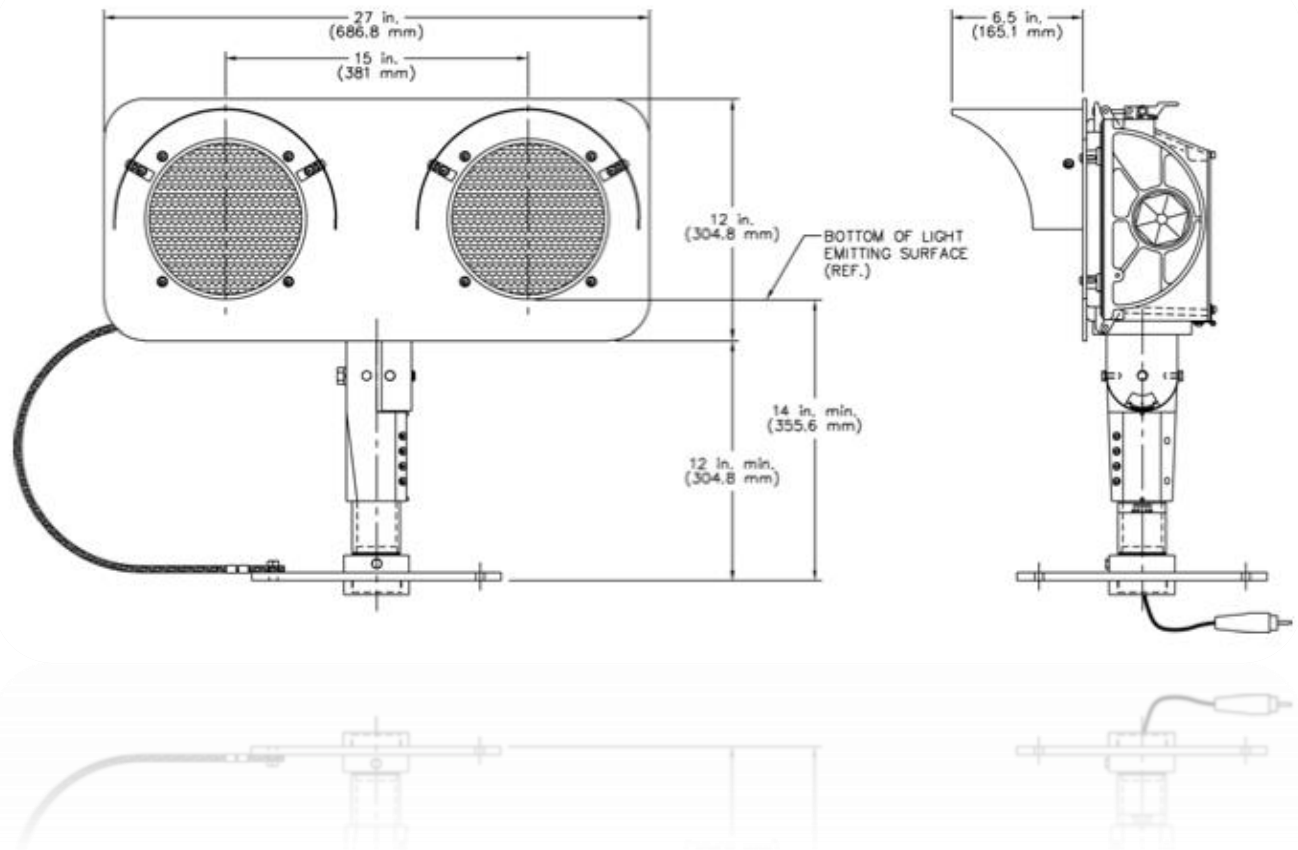
IQAirport.com

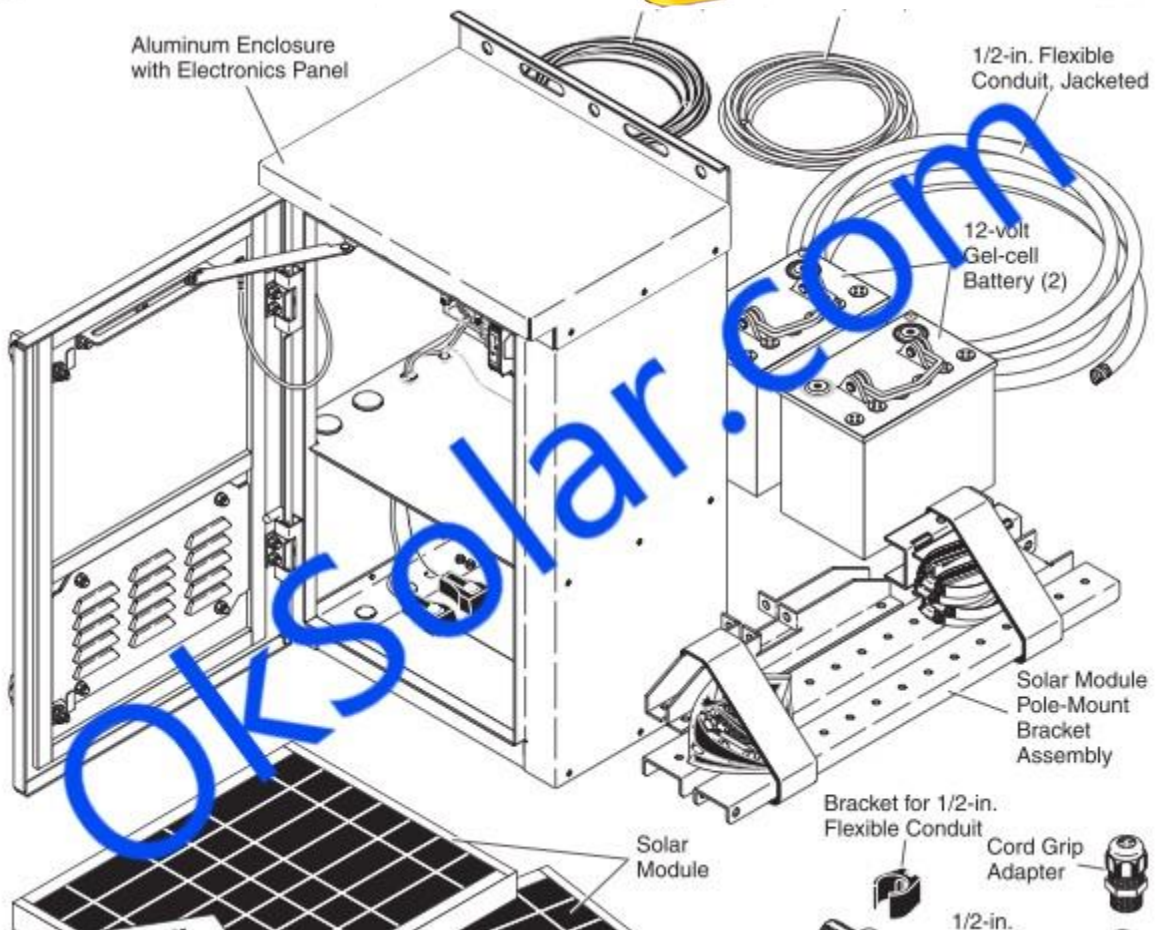
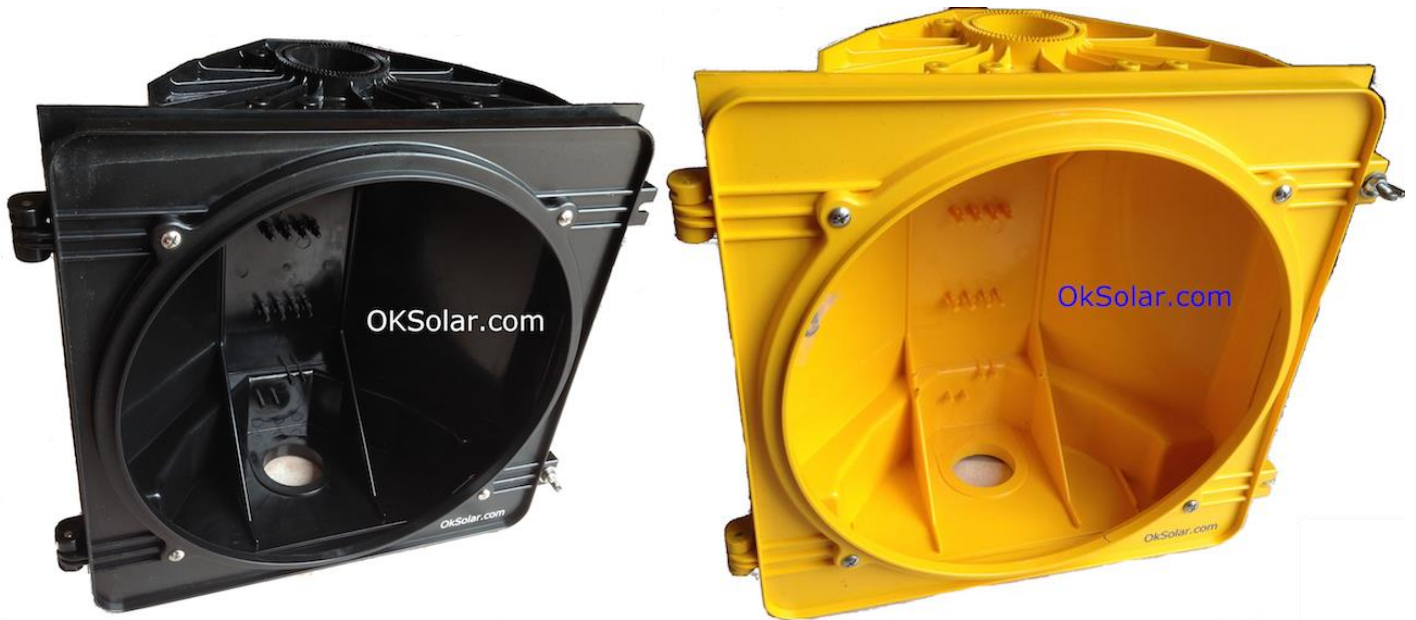
Elevated Runway Guard Light Configurations Samples

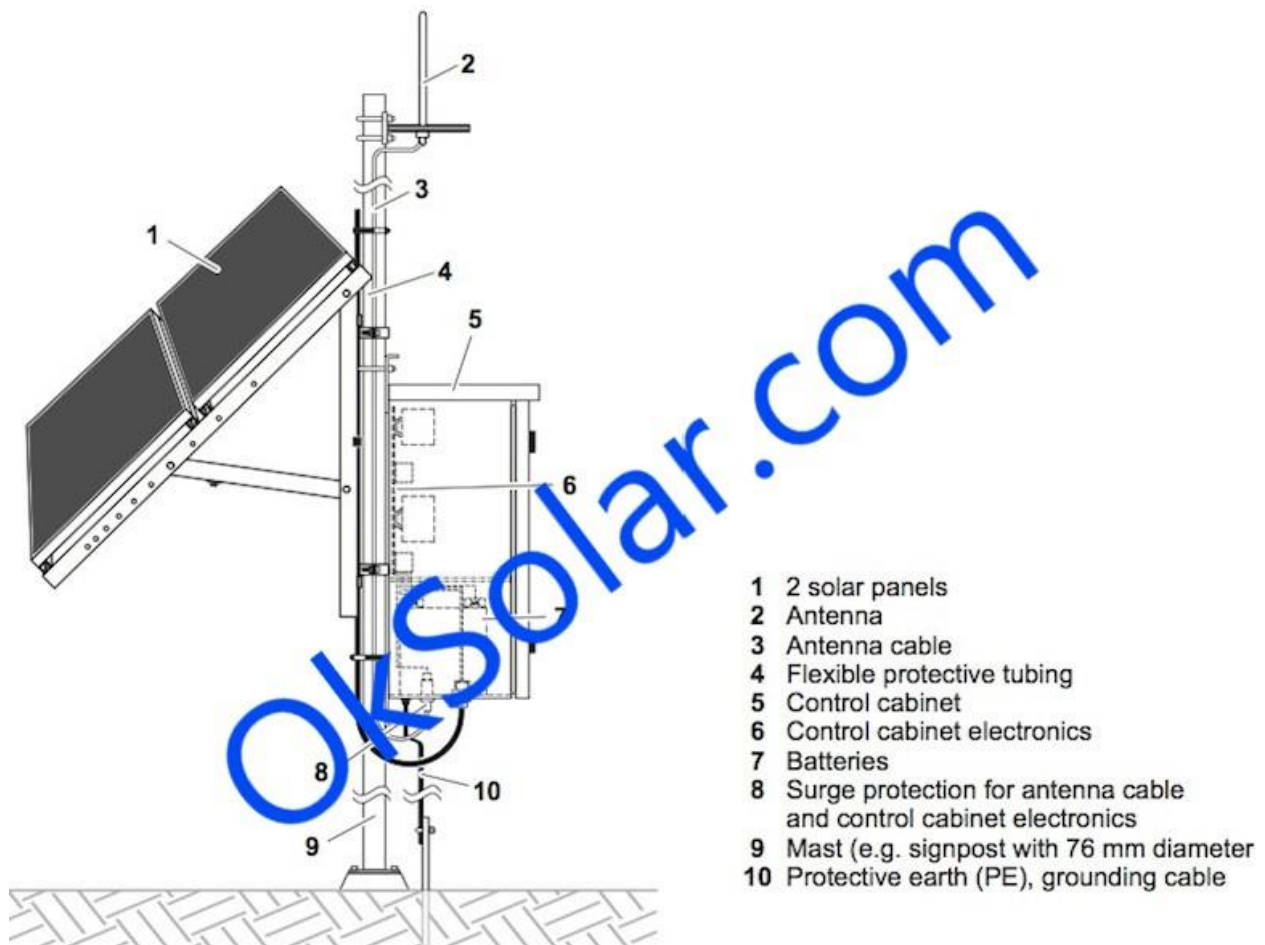
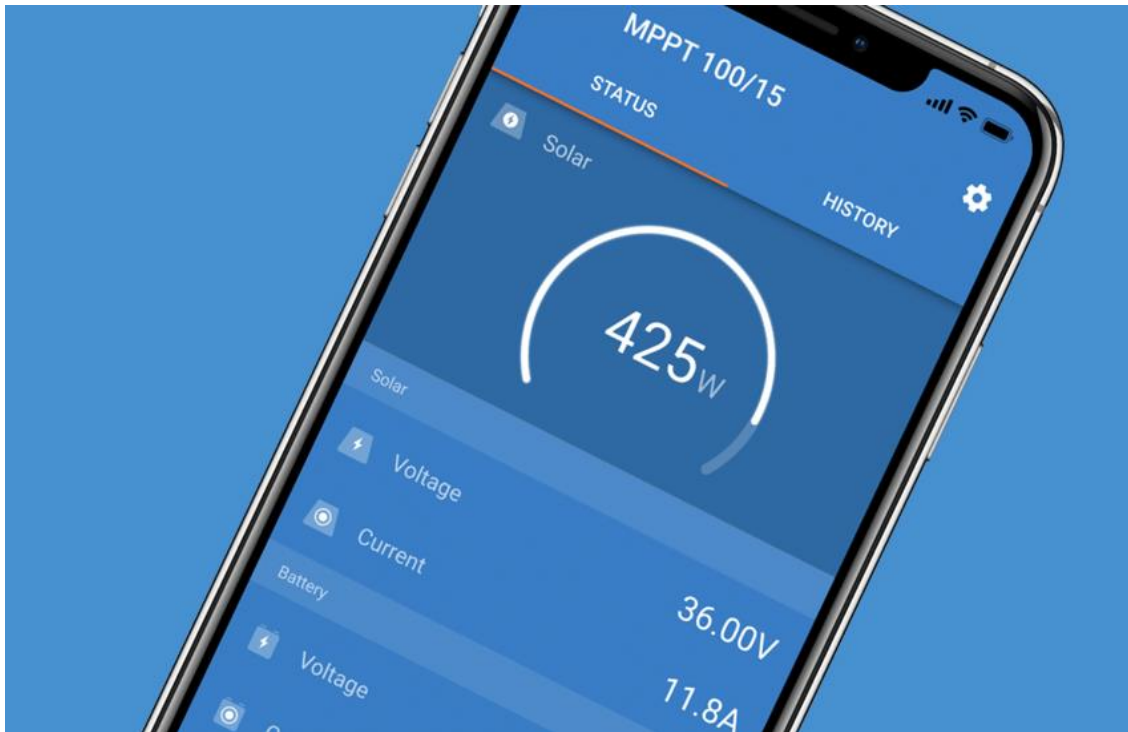
Flashing OkSolar elevated runway guard lights (OKSOLAR-ERGL) provide a distinctive warning to pilots that they are approaching a runway holding position and are about to enter an active runway. The OkSolar OKSOLAR-ERGL has a high intensity LED light source and is powered by our industry-leading OkSolar engine power supply (SPDC). The OKSOLAR-ERGL installs in minutes with no trenching, cabling or external power, and can be relocated just as quickly. Remote controlled or monitored (optional).

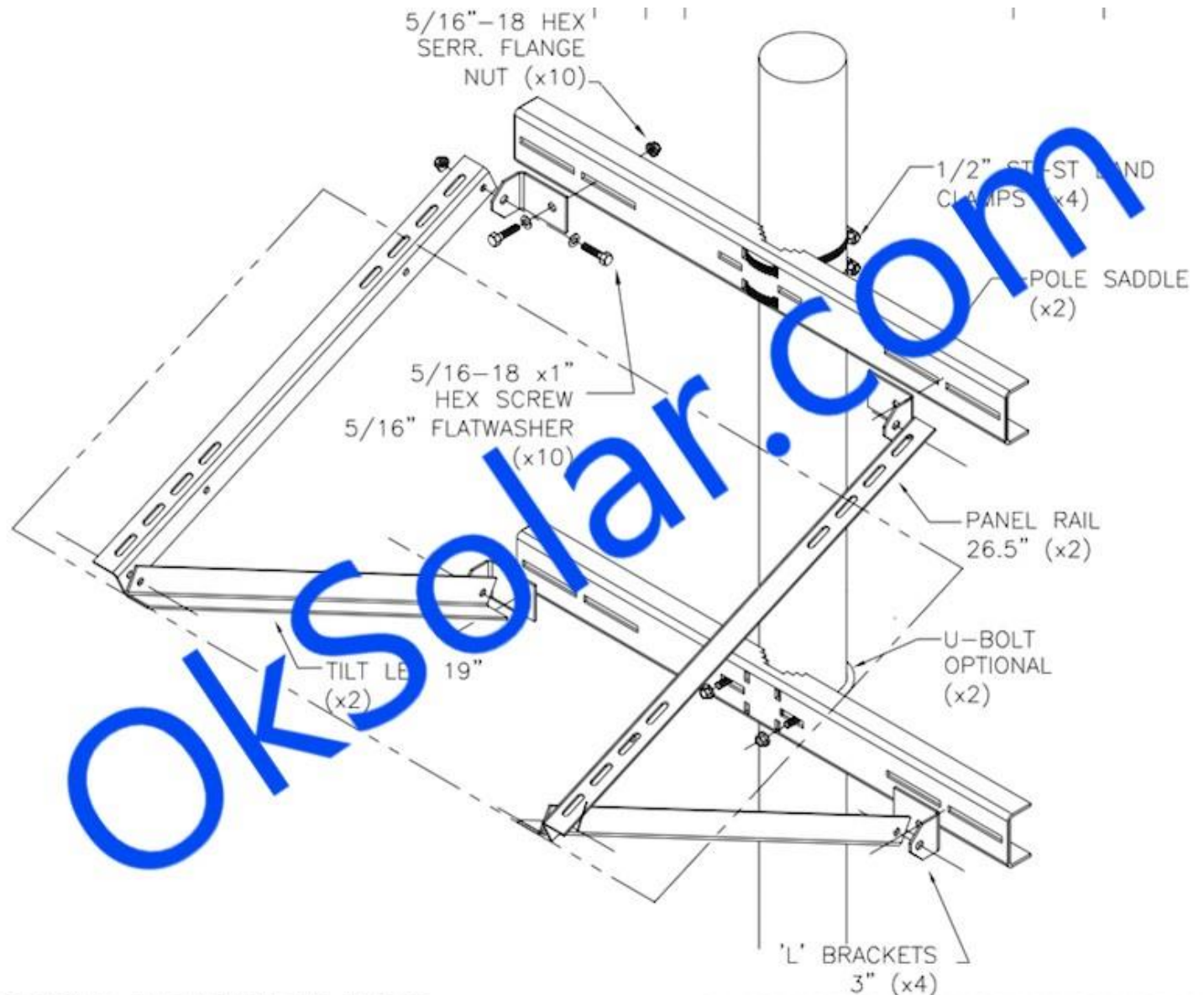
An ideal choice for airfields that require improved safety measures but experience difficulties with grid access, a solar OKSOLAR-ERGL makes it even easier to retrofit existing runways with this effective and preventative solution.

- Runway guard lights provide 24-hour unidirectional marking at runway and taxiway intersections.
- The solar OKSOLAR-ERGL installs in minutes and can be relocated just as quickly.
- Includes LED lights, frangible column and tether.
- The flash rate of the runway guard light is controlled from an intelligent lighting control system module located in the SPDC; alternating flashes, 45–50 per minute.
- Adjustable light beam can be aimed both vertically and horizontally – 0-20° vertically, $\pm 20^\circ$ horizontally.
- Significant reduction of maintenance costs and relamping expenses through long-lasting LED technology—average LED life of 56,000 hours under high-intensity conditions and more than 100,000 hours under actual operating conditions
- Engineered for reliable performance, the energy management system (EMS) monitors and adapts brightness to environmental conditions for consistent operation and long life under tough conditions.
- 7+ days of autonomy (operation without solar charging), scalable to meet requirements up to 40 days.
- 7+ years of battery life
- 25+ years of Solar Modules.
- Smart OkSolar Charge Controller Bluetooth Remote Monitoring and Control













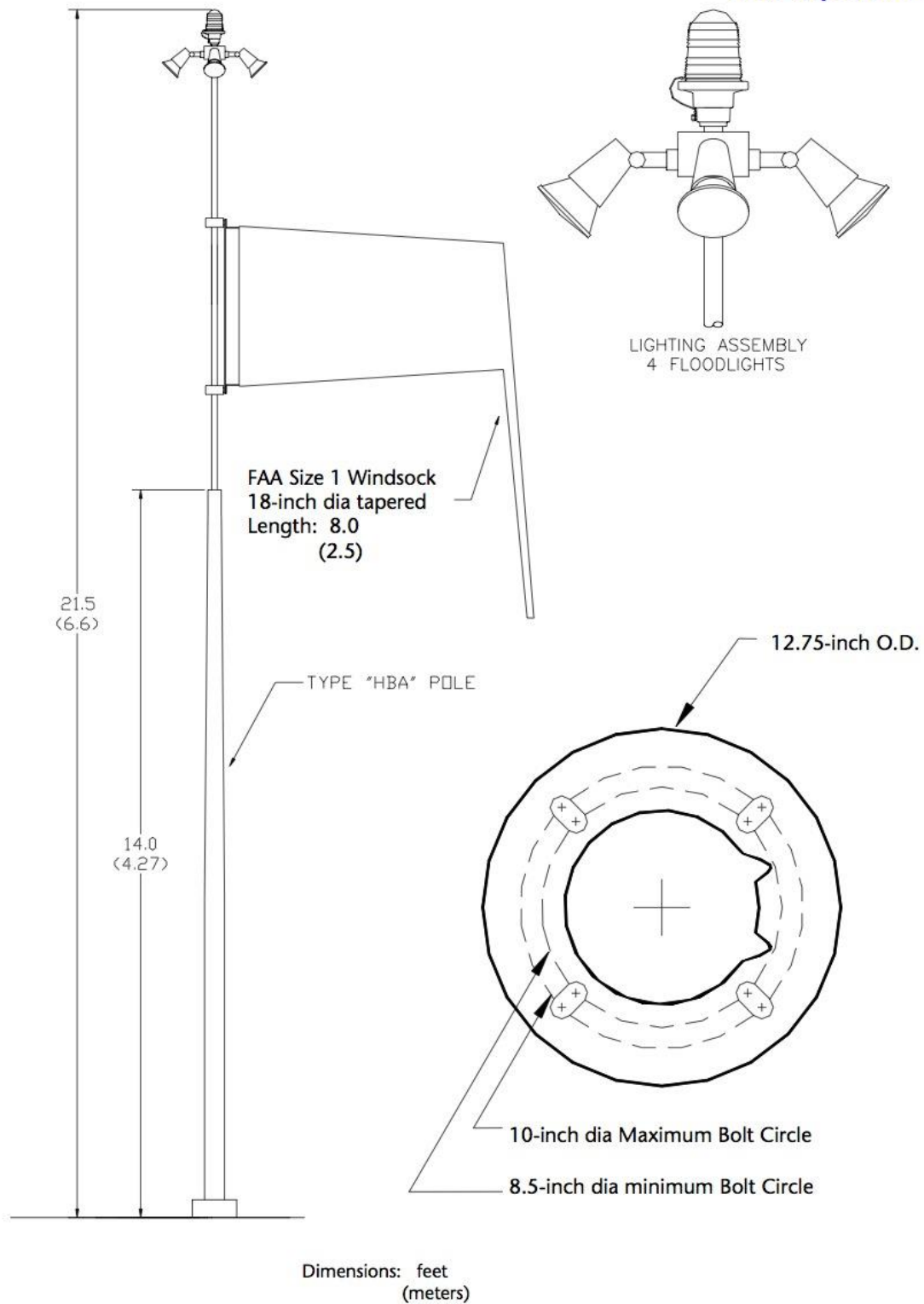


Airport Security Lighting Integrated 80Watts





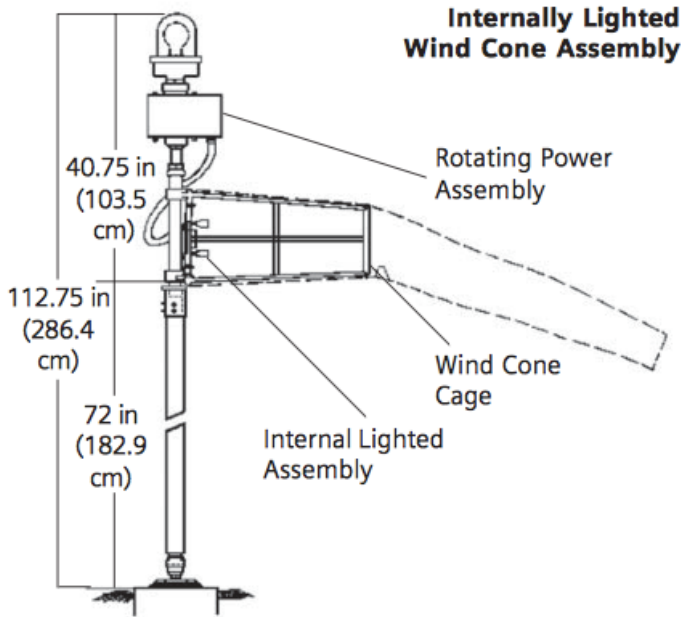






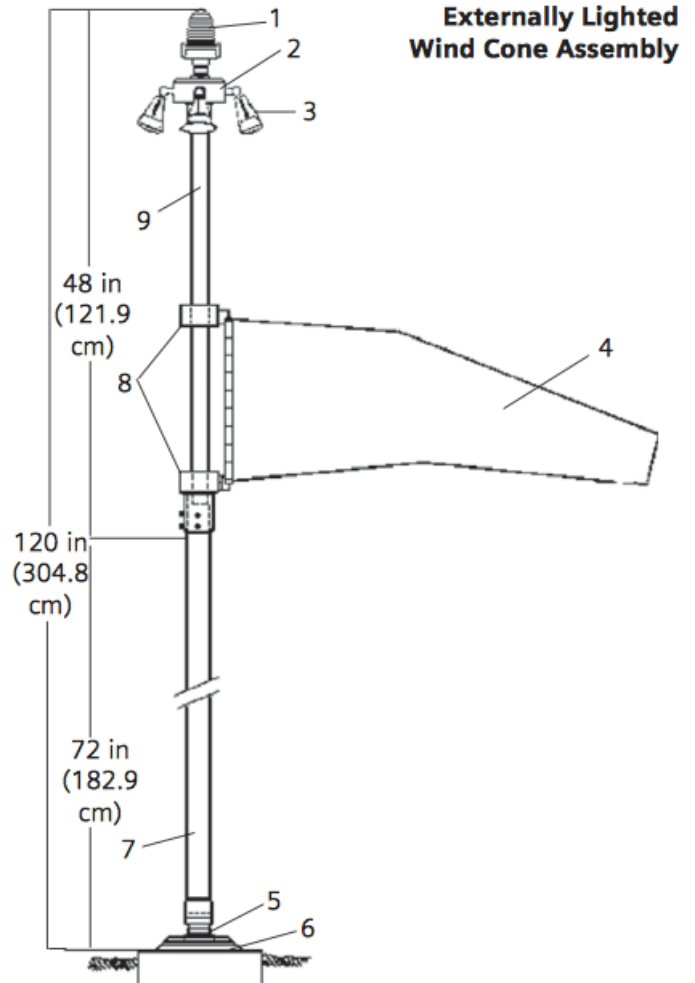
Construction

1. L-810 Obstruction Light
2. Junction Box
3. External Lighting Assembly
4. 8-ft (2.5 m) Wind Sock
5. Frangible Coupling
6. Pole Support Base
7. Aluminum Mast
8. Bearings
9. Shaft Assembly



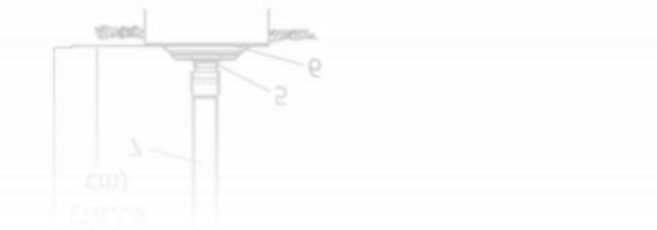
Internally Lighted Wind Cone Assembly

Internally Lighted Wind Cone Assembly

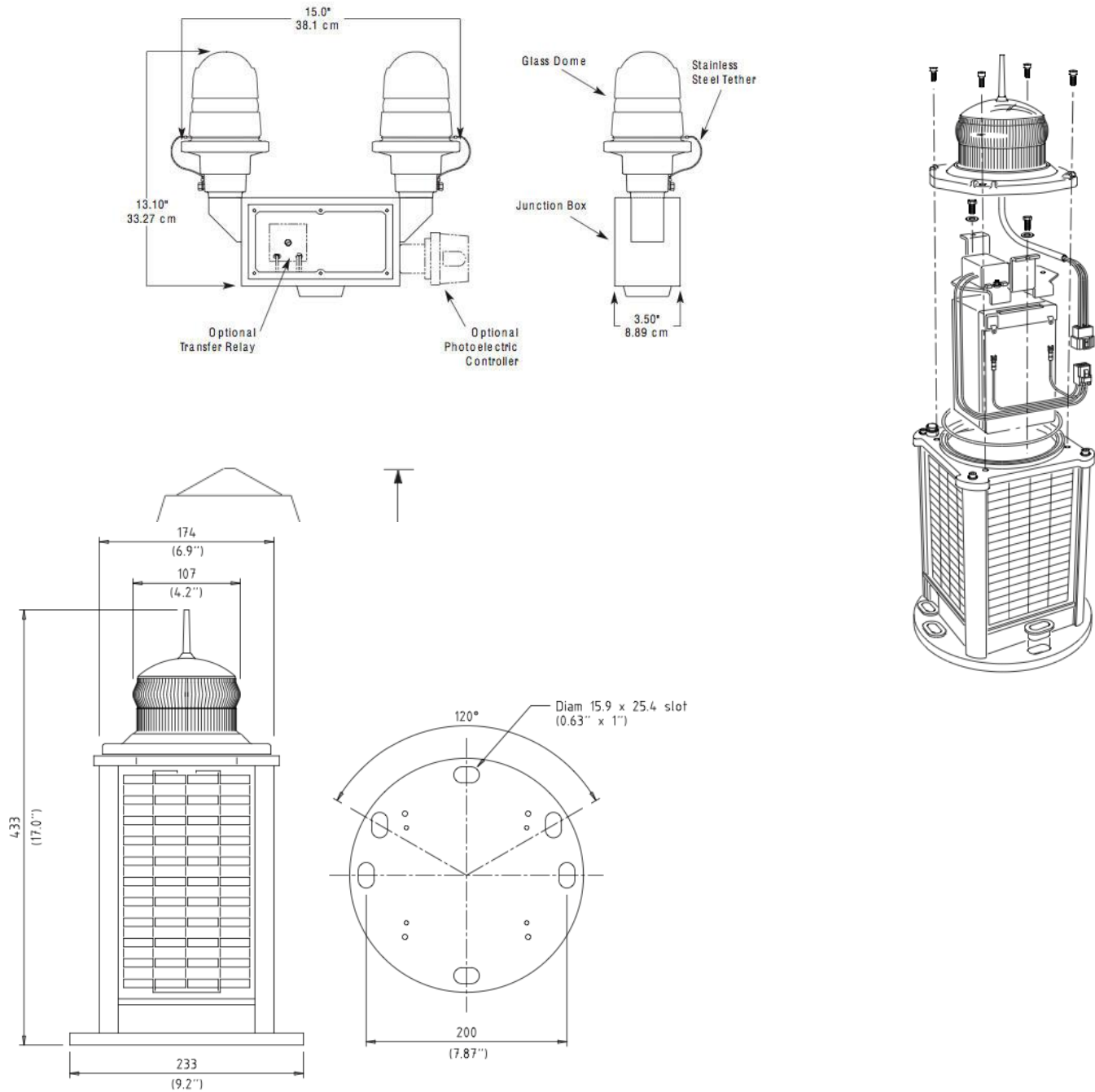


Externally Lighted Wind Cone Assembly

Externally Lighted Wind Cone Assembly







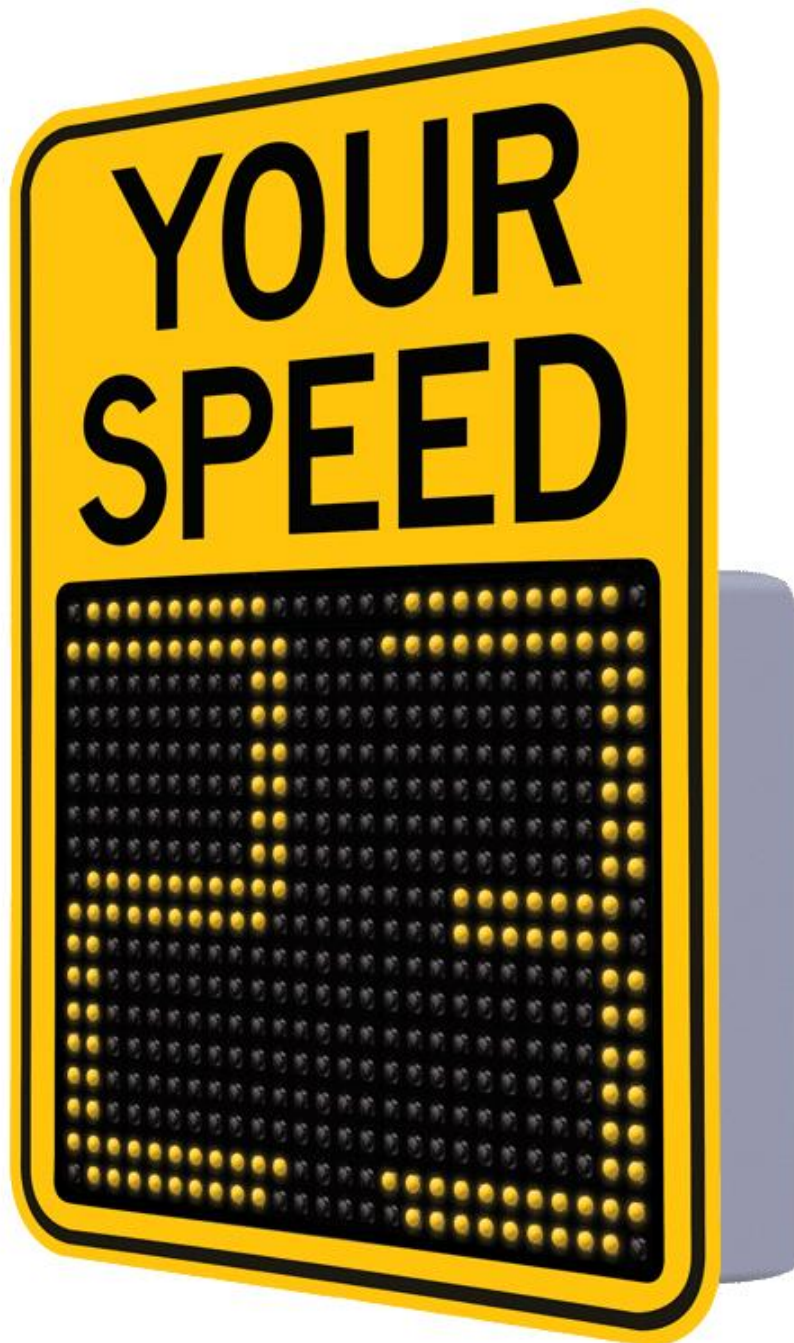








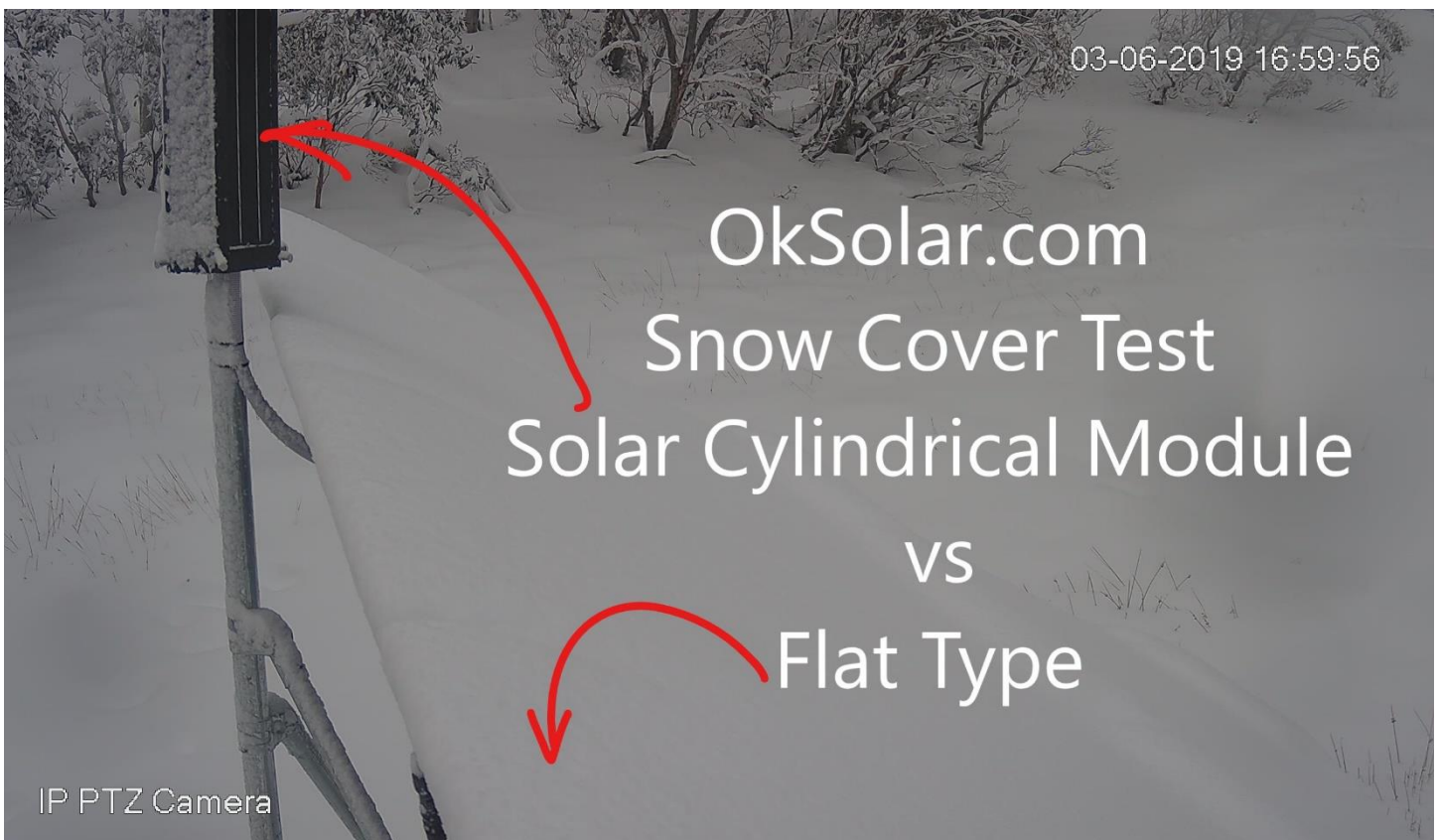
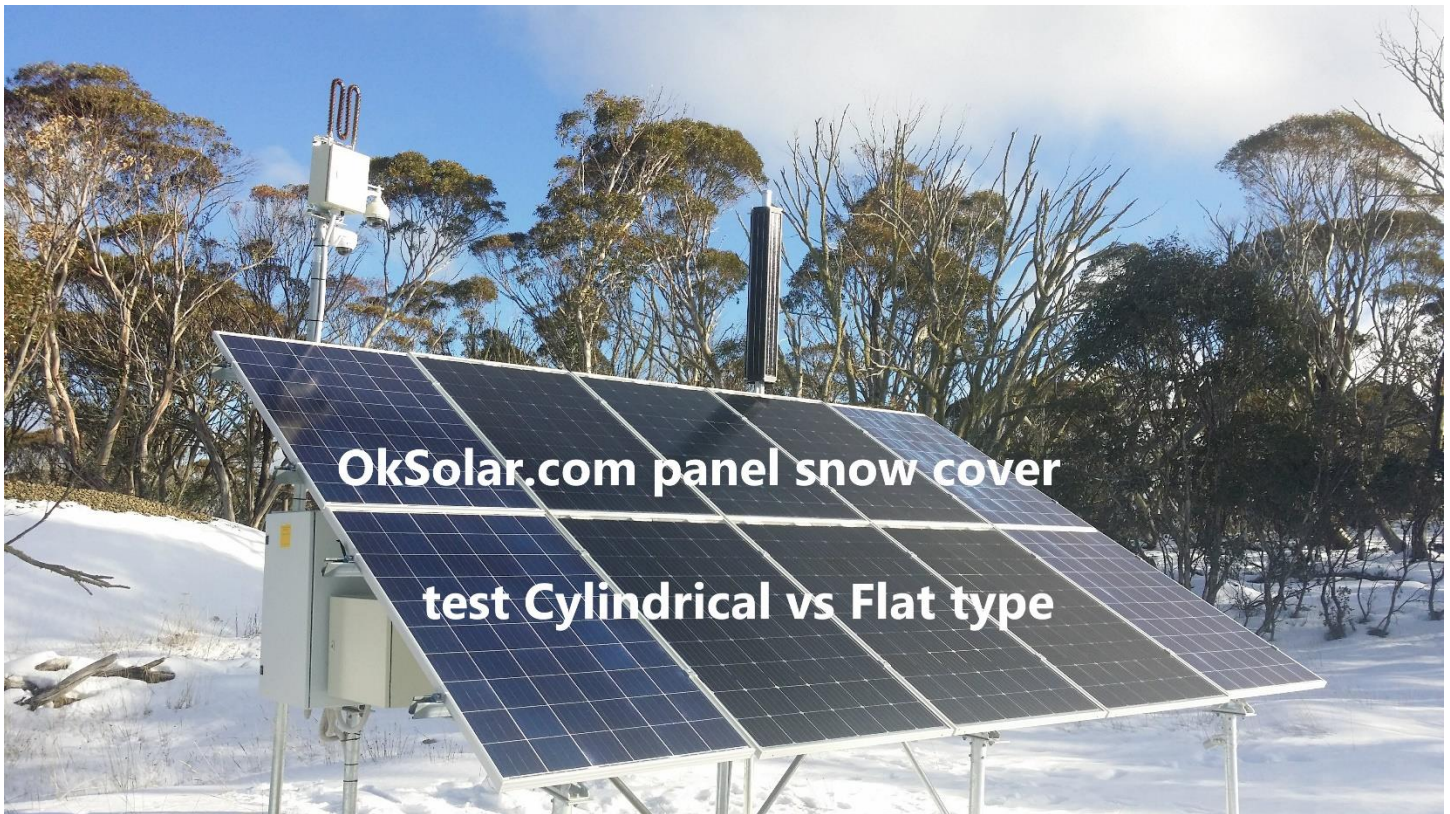












OkSolar.com panel snow cover test
Cylindrical
vs
Flat type



OkSolar.com







IQTrafficControl.com
OkSolar.com